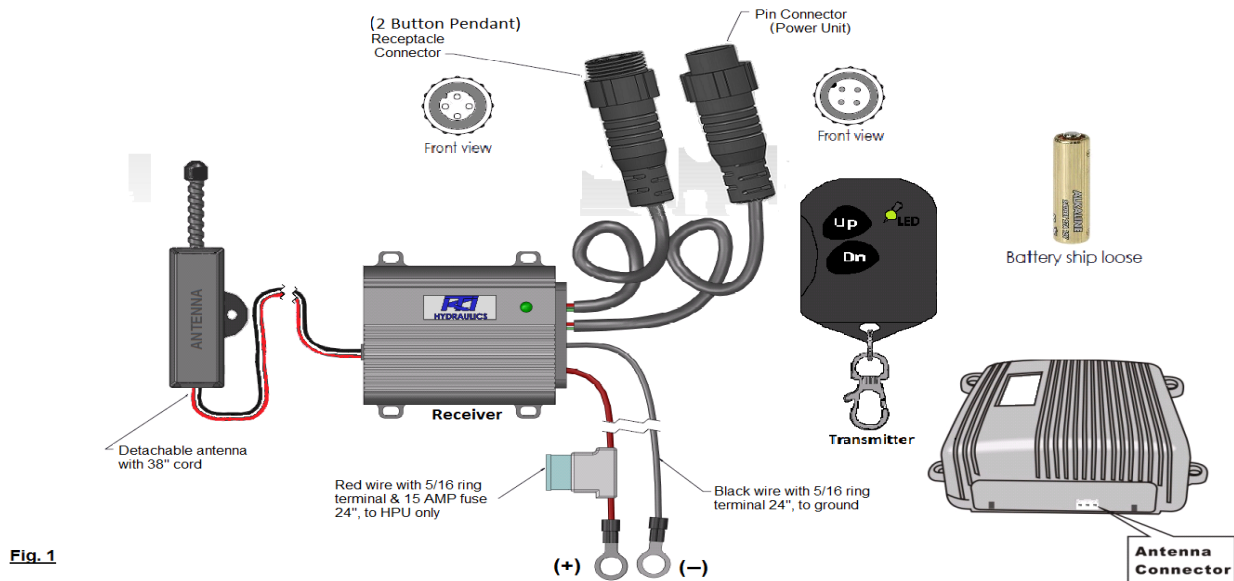


Wireless Instruction Manual (P/n KWR-003)



*******Wireless Remote Comes Preprogrammed*******

Installation

- 1.) Mount **Wireless Receiver**.
 - a. Select desired mounting location preferably in a sealed box and out of harm's way.
 - b. **Antenna must** be mounted outside, not in metal box.
 - 2.) Connect **Pin Connector** to Power Unit. (Fig. 1)
 - 3.) Connect positive (**Red Wire**) & negative (**Black Wire**) ring terminal to **Hydraulic Power Units**. (Fig. 1)
 - a. Connect (+) Red wire to the same terminal on **Start Solenoid** as positive cable from the battery.
 - b. Connect (-) Black wire to motor housing or to negative terminal on the 2 terminal DC motor.
- Note:** Insure the Power Unit is grounded directly to the negative terminal on the battery, which is the designated grounding location.
- 4.) Operate **Wireless Unit** and **Remote Pendant** to insure proper functionality.
 - a. **Up** Button or **OUT**
 - b. **Down** Button or **IN**
 - 5.) Connect **Remote Pendant** to **Receptacle Connector** on Wireless Receiver. (Fig. 1)

Functions

- 1.) To turn power **ON** or **OFF**, press both buttons **Up** and **Dn** **simultaneously**. When the receiver is in OFF mode, the LED indicator will not illuminate. When the receiver in ON, the LED indicator will flash **GREEN** every 3 seconds to show that the receiver is connected to a power source above 9 Volts. If the power source is below 9 Volts the LED indicator will flash **RED** every 3 seconds.
- 2.) When receiver is ON, press any button on key fob, the LED on receiver stays ON, LED light cuts off when release button.
- 3.) **20 Minute Shut-down Mode** (Receiver shuts down after being idle for 20 minutes).
 - a. Press both buttons (**Up** & **Dn**) to turn the receiver ON.
 - b. In **Shutdown Mode**; (**Output 2**) the Remote Pendant) is still active. (Fig. 1)

Wireless Instruction Manual (P/n KWR-003)

How to Program Remote Key Fob to Wireless Unit (Programming Mode)

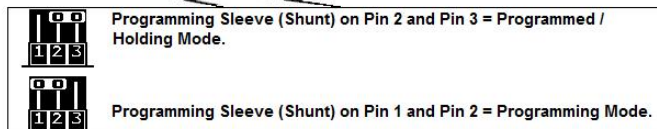
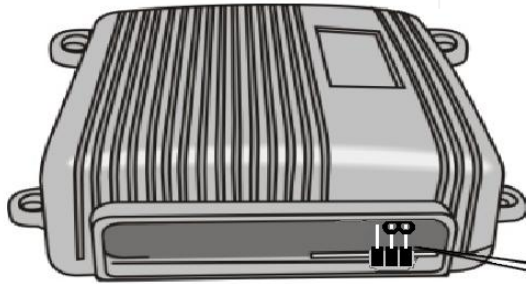


Fig. 2

- 1.) Remove wired hand control (**Remote Pendant**) to prevent accidental operation.
- 2.) Place **Programming Sleeve** (Shunt) on **Pin 1** and **Pin 2**, to activate Programming Mode. **Fig. 2,3,4**

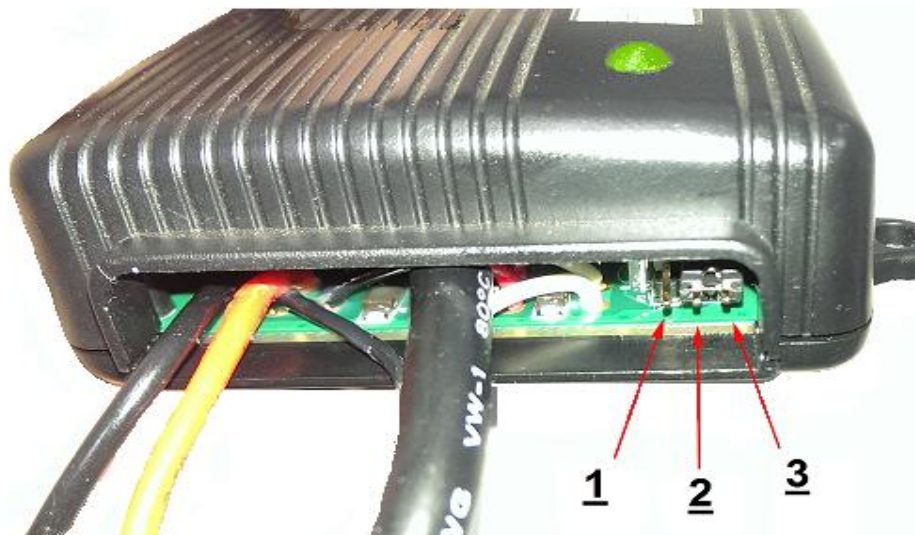


Fig. 4

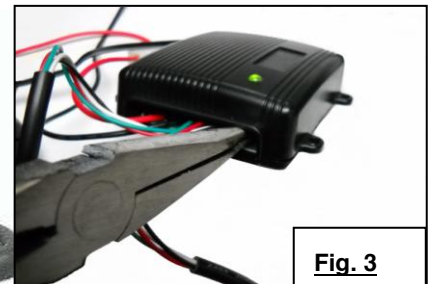


Fig. 3

- 3.) When in **Programming Mode**, the LED indicator will flash **Red** to show status. Press any button on the Key Fob, when the receiver has stored the signal from the Key Fob, the LED indicator will flash **Green** for **2 seconds**; then will flash **Red** to confirmation the frequency has been stored. Repeat this set when programming multiple Key Fobs.
- 4.) Install **Program Sleeve** (Shunt) on **Pin 2** and **3** to end Programming Mode. **(Fig. 2 & 4)**
Note: When in Programming Mode the transmitter must be operated within 3 - 5 seconds to program new code, otherwise the Receiver will resume previous frequency. Operating Frequency: 315MHz
- 5.) You may program up to **4 key fobs** to one Receiver. When programming a 5th Key fob, the Receiver will drop the 1st programmed key fob.

For Warranty and Trouble shooting, please contact KTI Hydraulics, Inc. - Service Department (949)752-8818.

*******Wireless Receiver may not operate below 9 Volts*******